

## CMR24 Series Overview

### Description

Cosmau cmr24 series multiple passage rotary unions with 24 channel for media transfer, design for compressed air, gas in rotating system.

- Transmit compressed air, gas when 360°unrestricted rotation
- Combined with electrical slip ring,transfer power,control signal, data
- Through hole or flange structure optional
- Very low torque



### Specifications

Item	
Pneumatic Channel	24
Pressure	-100kPa ~ 1MPa
Connection Szie	M5, 1/8"
Connection Type	NPT, BSPP
Operating Temperature	-5° C to 80° C
Suitable Media	Air / Gas / Vacuum
Speed	120 RPM (reference)
Material	AL alloy

All values listed under Technical Specifications are dependent on a combination of all application parameters. Please note operational life is dependent upon both rotational speed and duty cycle.

### Options

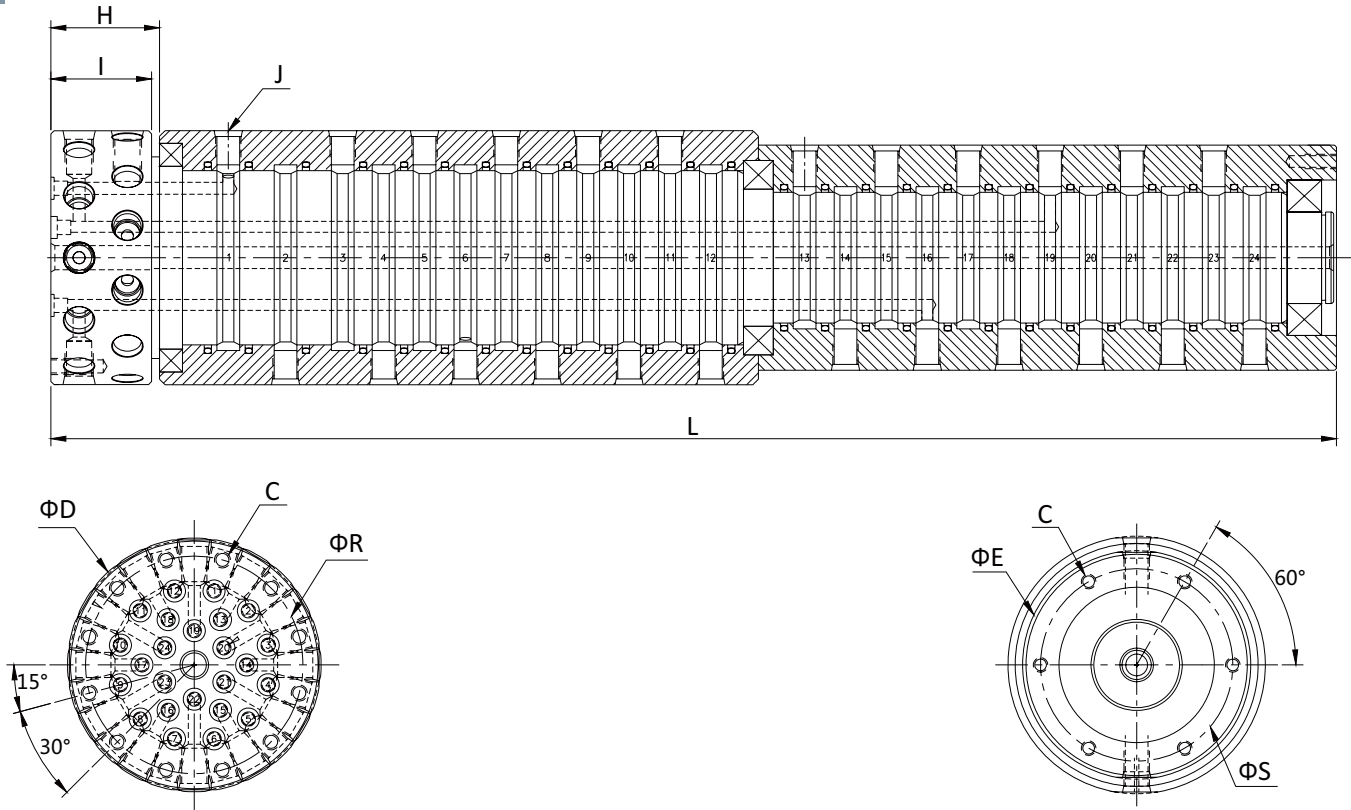
- Mounting Flange
- Connection Size
- Connection Type
- Material
- Pressure
- Media
- Optional Speed
- Combine with electrical slip ring

# INTRODUCE

## CMR24

15

### CMR24 Series Dimensions



Part#	J(BSPP/NPT)	ΦR	ΦS	C	ΦD	ΦE	H	I	L
CMR-2400	M5	71	53	M4	79	61	23.5	22.5	265
CMR-2401	1/8"	76	57	M5	84	66	32.5	31.5	302